

SITE LIGHTING INSTALLATION NOTES

- 1.00 PUBLIC LIGHTING INSTALLATION TO COMPLY WITH DCC PUBLIC LIGHTING SPECIFICATIONS.
- 2.00 ALL CABLING TO PUBLIC LIGHTING LOCATIONS TO BE WIRED IN BROWN, BLUE & GREEN/YELLOW COLOURED 3 CORE 5mm² CU/PVC SWAYE/CPVC CONTAINED IN Ø110mm RED HOPE DUCTS, 5mm THICK, STAMPED "PUBLIC LIGHTING".
- 3.00 ALL IN-GROUND HDPE DUCTS TO BE INSTALLED BY THE MAIN CONTRACTOR UNDER THE COORDINATION OF THE ELECTRICAL CONTRACTOR.
- 4.00 THE ELECTRICAL CONTRACTOR SHALL, PRIOR TO THE INSTALLATION, VERIFY THE CAPACITY OF THE IN-GROUND DUCT NETWORK TO THE MAIN CONTRACTOR.
- 5.00 SWITCHING OF PUBLIC LIGHTING SHALL BE VIA A 7-PRONG TWIST LOCK NEMA SOCKET WITH A PHOTO-ELECTRONIC SWITCH.
- 6.00 THE PHOTOCELL USED SHALL COMPLY WITH THE LATEST VERSION OF BS6972. THE PHOTOCELL CONTROL SHALL SWITCH ON/OFF THE LUMINAIRES AT 35/18 LUX RESPECTIVELY.
- 7.00 ALL OUTGOING CIRCUITS FROM MINI PILLARS (NEW OR EXISTING) SHALL BE INDIVIDUALLY FUSED BY MEANS OF A 16 OR 20 AMP HRC CUT-OUT TYPE AND CAPABLE OF ACCOMMODATING CABLE SIZES UP TO 25mm². THESE FUSES SHALL BE RATED 20A MINIMUM RUPTRING CAPACITY AND SHALL COMPLY WITH BS88.
- 8.00 ALL PUBLIC LIGHTING COLUMNS ARE SUPPLIED FROM A PUBLIC LIGHTING MINI-SECTION PILLAR, LOCATED ADJACENT TO THE ESB NETWORKS MINI-SECTION PILLAR. NOT MORE THAN 6 COLUMNS SHALL BE SUPPLIED FROM ANY ONE CIRCUIT AND NOT MORE THAN 4 CIRCUITS SHALL BE TAKEN FROM ANY ONE AUXILIARY MINI-SECTION PILLAR.
- 9.00 THE CONTRACTOR SHALL MAKE A FULL TECHNICAL SUBMITTAL TO THE DESIGN TEAM FOR ALL EXTERNAL LIGHTING FOR APPROVAL PRIOR TO ORDERING.
- 10.00 THE DEVELOPER SHALL NOTE THAT NO EXISTING PUBLIC LIGHTS CAN BE REMOVED WITHOUT THE PERMISSION AND APPROVAL OF PUBLIC LIGHTING SERVICES.
- 11.00 THE DEVELOPER SHALL CONTACT PUBLIC LIGHTING SERVICES AT LEAST 6 WEEKS IN ADVANCE OF WORKS STARTING ON SITE, TO FIND OUT WHAT IS REQUIRED TO BE DONE TO EXISTING PUBLIC LIGHTS THAT IS WITHIN THE SITE BOUNDARY.
- 12.00 ANY COSTS ASSOCIATED WITH THE RE-ARRANGEMENT OR ALTERATION OF THE EXISTING PUBLIC LIGHTING SHALL BE ENTIRELY AT THE DEVELOPER'S EXPENSE, INCLUDING ESB NETWORK COSTS.
- 13.00 WHERE PUBLIC ROADS ARE TO REMAIN IN USE, THEN THE PUBLIC LIGHTING MUST BE MAINTAINED BY THE DEVELOPER IN AN OPERATING CONDITION THROUGHOUT THE DEVELOPMENT PERIOD.
- 14.00 THE CONTRACTOR SHALL MAKE A FULL TECHNICAL SUBMITTAL TO THE DESIGN TEAM FOR ALL EXTERNAL LIGHTING FOR APPROVAL PRIOR TO ORDERING.
- 15.00 CABLE ENTRY SLOT DEPTH AND DIMENSIONS TO BE AS INDICATED IN THE DCC PUBLIC LIGHTING SPECIFICATION.
- 16.00 ALL PUBLIC LIGHTING LUMINAIRES MUST DIM TO 75% FULL LIGHT OUTPUT BETWEEN 12am AND 6am.

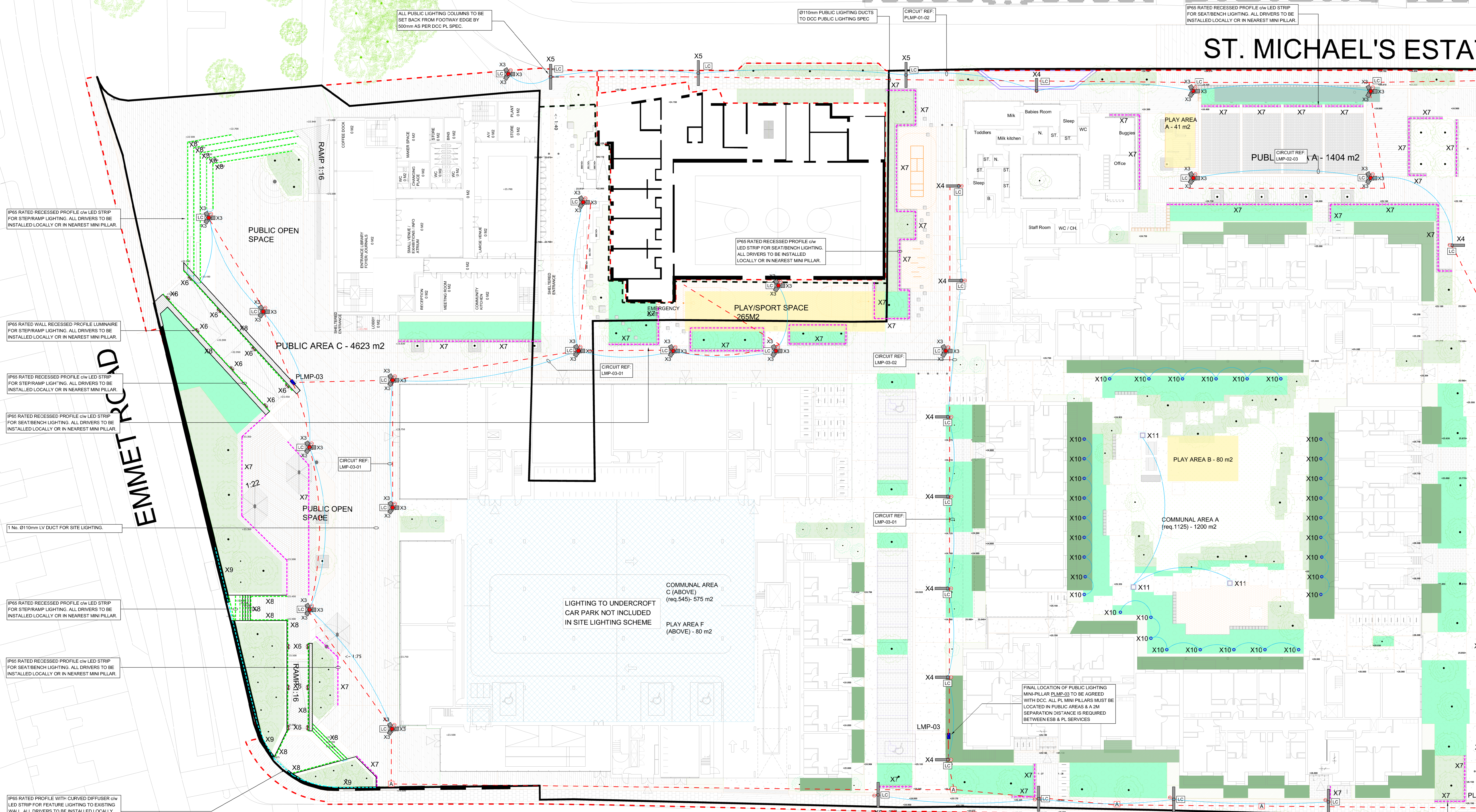
SITE LIGHTING SYMBOLS REFERENCE KEY

- LIGHTING CIRCUIT
- Ø110mm PVC DUCTS FOR DCC PUBLIC LIGHTING
- Ø110mm PVC DUCTS FOR SITE LIGHTING
- TYPE 'A' MAN-HOLE 600(L) x 600(W) x 600(D)
- EXTERNAL LIGHTING MINI-PILLAR
- PUBLIC LIGHTING COLUMN
- GENERAL SITE LIGHTING COLUMN
- MULTI-HEADED LED LUMINAIRE ON POLE w/ PHOTOCELL
- SINGLE HEADED LED LUMINAIRE ON INTEGRATED POLE w/ PHOTOCELL
- DOUBLE HEADED LED LUMINAIRE ON INTEGRATED POLE w/ PHOTOCELL
- RECESSED CIRCULAR LED LUMINAIRE
- RECESSED PROFILE w/ LED STRIP FOR SEATBENCH LIGHTING
- RECESSED PROFILE w/ LED STRIP FOR STEPRAMP LIGHTING
- PROFILE WITH CURVED DIFFUSER w/ LED STRIP FOR FEATURE LIGHTING TO EXISTING WALL

ST. MICHAEL'S ESTA

ST. VINCENT STREET WEST

ST. VINCENT ST. W



EMMET ROAD

ALL PUBLIC LIGHTING COLUMNS TO BE SET BACK FROM FOOTWAY EDGE BY 500mm AS PER DCC PL SPEC

Ø110mm PUBLIC LIGHTING DUCTS TO DCC PUBLIC LIGHTING SPEC

IP65 RATED RECESSED PROFILE w/ LED STRIP FOR SEATBENCH LIGHTING. ALL DRIVERS TO BE INSTALLED LOCALLY OR IN NEAREST MINI PILLAR.

IP65 RATED RECESSED PROFILE w/ LED STRIP FOR STEPRAMP LIGHTING. ALL DRIVERS TO BE INSTALLED LOCALLY OR IN NEAREST MINI PILLAR.

IP65 RATED WALL RECESSED PROFILE LUMINAIRE FOR STEPRAMP LIGHTING. ALL DRIVERS TO BE INSTALLED LOCALLY OR IN NEAREST MINI PILLAR.

IP65 RATED RECESSED PROFILE w/ LED STRIP FOR STEPRAMP LIGHTING. ALL DRIVERS TO BE INSTALLED LOCALLY OR IN NEAREST MINI PILLAR.

IP65 RATED RECESSED PROFILE w/ LED STRIP FOR SEATBENCH LIGHTING. ALL DRIVERS TO BE INSTALLED LOCALLY OR IN NEAREST MINI PILLAR.

1 No. Ø110mm LV DUCT FOR SITE LIGHTING.

IP65 RATED RECESSED PROFILE w/ LED STRIP FOR STEPRAMP LIGHTING. ALL DRIVERS TO BE INSTALLED LOCALLY OR IN NEAREST MINI PILLAR.

IP65 RATED RECESSED PROFILE w/ LED STRIP FOR SEATBENCH LIGHTING. ALL DRIVERS TO BE INSTALLED LOCALLY OR IN NEAREST MINI PILLAR.

IP65 RATED PROFILE WITH CURVED DIFFUSER w/ LED STRIP FOR FEATURE LIGHTING TO EXISTING WALL. ALL DRIVERS TO BE INSTALLED LOCALLY OR IN NEAREST MINI PILLAR. FINAL INSTALLATION DETAIL TO BE AGREED WITH ARCHITECT.

FINAL LOCATION OF PUBLIC LIGHTING MINI-PILLAR LMP-03 TO BE AGREED WITH DCC. ALL PL MINI PILLARS MUST BE LOCATED IN PUBLIC AREAS & A 2M SEPARATION DISTANCE IS REQUIRED BETWEEN ESB & PL SERVICES.

IP65 RATED RECESSED PROFILE w/ LED STRIP FOR SEATBENCH LIGHTING. ALL DRIVERS TO BE INSTALLED LOCALLY OR IN NEAREST MINI PILLAR.

